



# Overexpression of Interleukin-8 in Salivary Adenoid Cystic Carcinoma Correlates with Distant Metastasis

Dong LI<sup>1</sup>, Sheng Lin LI<sup>1</sup>, Cun Yu WANG<sup>2</sup>

**Objective:** To evaluate the protein expression of interleukin-8 (IL-8) in salivary adenoid cystic carcinoma (SACC) and to analyse its correlation with the clinicopathologic characteristics and prognosis.

**Methods:** A total of 43 cases of SACC and eight of normal salivary tissues were examined for the expression of IL-8 using immunohistochemistry, and the relationship of IL-8 expression with patients' clinicopathologic features was analysed.

**Results:** While the positive staining rate of IL-8 expression in SACC was 79.1% (34/43), the normal salivary tissues showed negative staining of IL-8 (0/8). IL-8 expression in SACC was positively related to distant metastasis of SACC ( $P < 0.05$ ), but not related to the gender, age, tumour location, and pathological types.

**Conclusion:** The overexpression of IL-8 in SACC might be involved in metastasis of SACC. The potential mechanism underlying IL-8 expression related to the prognosis and treatment of SACC needs further research.

**Key words:** salivary adenoid cystic carcinoma, interleukin-8, metastasis, prognosis

Salivary adenoid cystic carcinoma (SACC) is a highly infiltrative malignant tumour with a tendency for distant metastasis mostly to the lung, and has a high mortality rate despite good loco-regional control of the tumour<sup>1</sup>. Radical surgery, sometimes followed by radiation therapy, represents the main treatment approach for this disease<sup>2</sup>. However, the long-term survival and survival rate are still unsatisfactory. Defined genetic alter-

ations have not been ascribed to the distinct stages of tumour development in SACC. Understanding the mechanism of metastatic behaviour of this carcinoma might help to design new strategies for the diagnosis and treatment of SACC.

Recent investigations have led to an insight into the mechanism of the chemokine network and its influence in the development of primary tumours and metastases<sup>3</sup>. Interleukin-8 (IL-8) was the first multifunctional chemokine found by Yoshimura<sup>4</sup> in 1987 and was believed to be closely related to inflammatory response and several key stages of tumour progression, such as tumour growth, angiogenesis, invasion and metastasis<sup>5-7</sup>. However, there are few studies about the role of IL-8 in SACC development. In this study, the IL-8 protein expression in normal salivary tissues and primary SACC tissues was investigated and its correlation with the clinicopathologic characteristics and prognosis of SACC was analysed.

1 Laboratory of Oral and Maxillofacial Surgery, Peking University School and Hospital of Stomatology, Beijing, P.R. China

2 Laboratory of Molecular Signaling, Division of Oral Biology and Medicine, UCLA School of Dentistry, Los Angeles, USA

**Corresponding author:** Dr Sheng Lin LI, Laboratory of Oral and Maxillofacial Surgery, Peking University School and Hospital of Stomatology, #22 Zhongguancun Nandajie, Haidian District, Beijing 10081, P.R. China. Tel: 86-10-62179977 ext 2534; Fax: 86-10-62173402. E-mail: kqshlli@bjmu.edu.cn

**Table 1** Tumour location of 43 cases of SACC

	Total	Tumour location	Number of cases
Major salivary glands	26	Parotid gland	8
		Sublingual gland	9
		Submandibular gland	9
Minor salivary glands	17	Palate	8
		Maxilla region	5
		Mandibular posterior region	1
		Tongue	2
		Lip	1
Total	43		

## Materials and Methods

### *Patients and specimens*

Archived formalin-fixed paraffin-embedded tissue blocks from 43 patients with SACC during 1999 and 2007 were obtained from the Department of Oral Pathology, Peking University School and Hospital of Stomatology. Among these patients, 20 were males and 23 were females, aged from 17 to 71 years with a median age of 45 years. The distribution of tumour location is shown in Table 1. A total of 17 out of the 43 patients presented with synchronous or developing metachronous metastasis as identified by following up 5 to 10 years after the primary surgery. Eight cases of normal parotid gland tissues were used as the control.

### *Immunohistochemistry*

The antibodies and reagents used for immunohistochemistry (IHC) were obtained from Boster Biological Technology (Wuhan, China). The tumour specimens were fixed in formalin, paraffin embedded, and cut into 4  $\mu$ m sections for the IHC analysis of IL-8 expression. Sections were deparaffinised in xylene and rehydrated by immersion in a graded series of ethanol dilutions. The sections were dipped in freshly prepared 3% H<sub>2</sub>O<sub>2</sub> in distilled water for 10 min to block endogenous peroxidase activity and rinsed with distilled water three times. For antigen retrieval, the sections were boiled in 0.01 mmol/L sodium citrate buffer solution by a microwave oven for 5 min. The sections were blocked in blocking buffer for 20 min and then incubated with anti-IL-8 antibody overnight at 4 °C (1:40 dilution) in a humid chamber. For negative control, the sections were incubated without the primary antibody. The sections were washed with phosphate-buffered saline thoroughly three times and stained using SABC method. The color was devel-

oped with diaminobenzidine, followed by counterstaining with hematoxylin. Photographs were taken with a microscope (OLYMPUS BX60 and DP71, Japan).

### *Assessment of IL-8 immunoreactivity*

Immunostaining was assessed in three randomly selected fields in each section. The distribution and intensity of IL-8 immunostaining were assessed semi-quantitatively<sup>8</sup>. Briefly, the scores of each section were summed up from the percentage of positive cells (1: less than 25% positive cells; 2: 25% to 50% positive cells; 3: more than 50% positive cells) and the staining intensity (0: negative; 1: weak; 2: moderate; 3: strong). Scores between 0 and 2 were regarded as negative, 3 and 4 as weak positive, and 5 and 6 as strong positive.

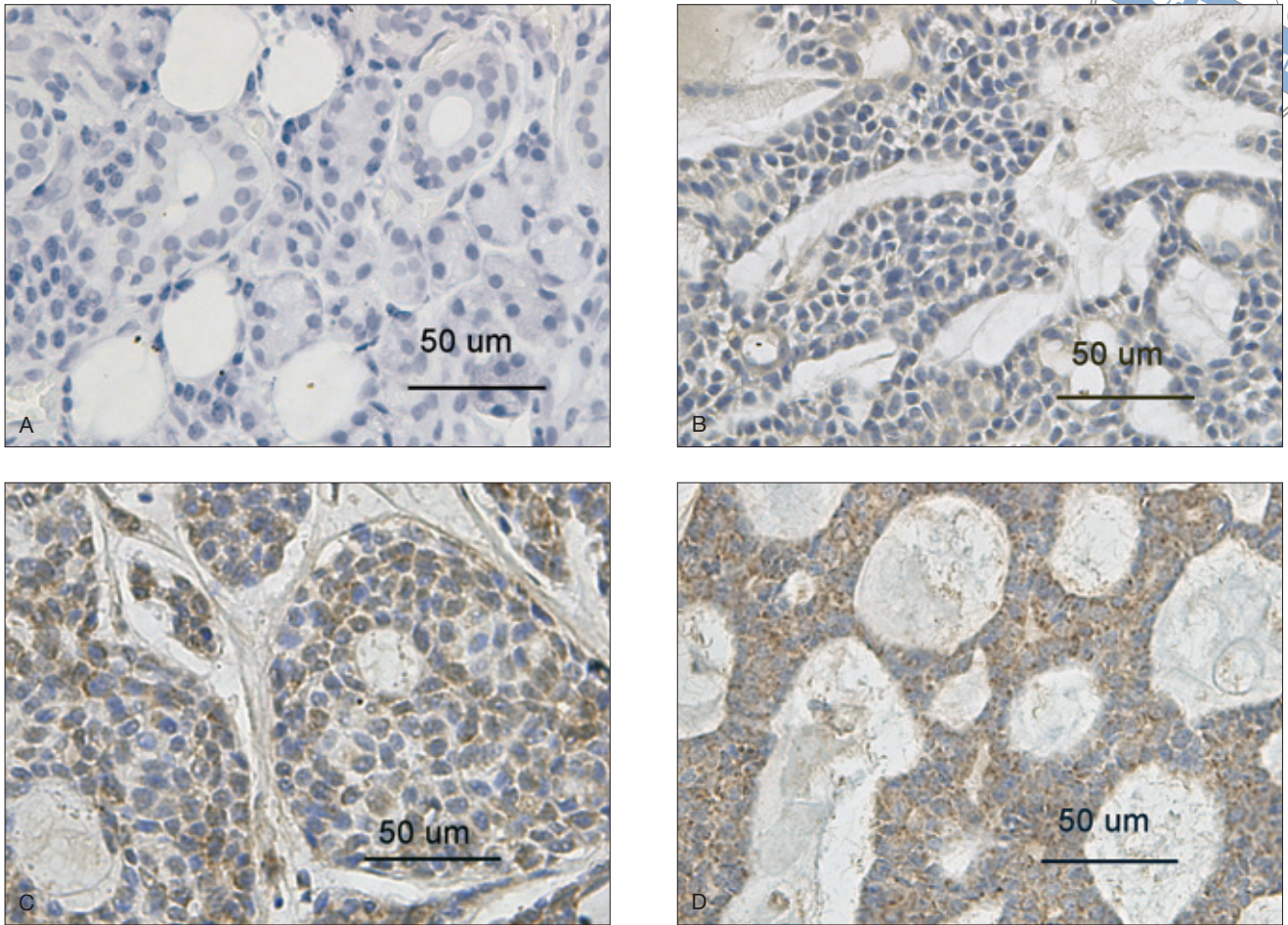
### *Statistical analysis*

Statistical analysis was performed with SPSS 11.5 for Windows. The chi-square test or Fisher's exact probability was performed to examine the correlation of IL-8 expression with clinicopathologic indexes. For all of the tests, the level of significance was set at  $P < 0.05$ .

## Results

### *Protein expression of IL-8 in normal salivary tissues and primary SACC tissues*

There was no specific IL-8 staining observed in the eight normal salivary tissues (Fig 1A). Immunoreactivity for IL-8 in SACC tissues is summarised in Table 2. The positive staining was brown–yellow particles predominantly in cytoplasm in SACC tumour cells (Fig 1C and D). Among the 43 cases of SACC specimens, the staining of IL-8 was strong positive in 18 cases (41.9%), weakly



**Fig 1** Immunohistochemical detection of IL-8. (A) negative expression in normal salivary tissues; (B) negative control of SACC tissue (substituted the primary antibody with phosphate-buffered saline); (C) weak positive in SACC tissue; (D) strong positive in SACC tissue.

**Table 2** IL-8 expression in normal salivary tissues and primary SACC tissues

	Total	IL-8 expression (%)			Positive rate	<i>P</i>
		Negative	Weak positive	Strong positive		
SACC tissues	43	9 (20.9%)	16 (37.2%)	18 (41.9%)	79.1%	
Normal salivary tissues	8	8	0	0	0	<0.01

positive in 16 cases (37.2%) and negative in 9 cases (20.9%) (Table 2).

*Analysis of the relationship between IL-8 expression and clinicopathologic features*

The relationship between clinicopathologic features and IL-8 expression in SACC is summarised in Table 3. A total of 17 out of 43 SACC patients showed distant

metastasis and 26 cases without metastasis. The positive rates of IL-8 immunostaining in the metastatic group and non-metastatic group were 88.2% and 73.1% respectively ( $P < 0.05$ ), and the strong positive rates were 64.7% and 26.9% respectively. IL-8 expression in SACC was positively correlated with distant metastasis of SACC ( $P < 0.05$ ), but not related to gender, age, tumour location or pathological types ( $P > 0.05$ ).

**Table 3** The relationship between IL-8 protein expression and clinicopathologic features in SACC

Characteristics	Total	IL-8 expression (%)			Positive rate	$\chi^2$	P
		Negative	Weak positive	Strong positive			
Distant metastasis						6.048	0.049
no	26	7 (26.9%)	12 (46.2%)	7 (26.9%)	73.1%		
yes	17	2 (11.8%)	4 (23.5%)	11 (64.7%)	88.2%		
Pathological type						3.958	0.412
cribriform	22	4 (18.2%)	11 (50.0%)	7 (31.8%)	81.8%		
trabecular	15	4 (26.7%)	4 (26.7%)	7 (46.7%)	73.4%		
solid	6	1 (16.7%)	1 (16.7%)	4 (66.7%)	83.4%		
Tumour location						10.82	0.094
parotid	8	2 (25.0%)	4 (50.0%)	2 (25.0%)	75.0%		
sublingual gland	9	2 (22.2%)	4 (44.4%)	3 (33.3%)	77.7%		
submandibular gland	9	0(0%)	1 (11.1%)	8 (88.9%)	100%		
minor salivary glands	17	5 (29.4%)	7 (41.2%)	5 (29.4%)	70.6%		
Gender						0.125	0.940
male	20	4 (20.0%)	8 (40.0%)	8 (40.0%)	80.0%		
female	23	5 (21.7%)	8 (34.8%)	10 (43.5%)	78.3%		
Age						4.984	0.083
≤50	27	6 (22.2%)	13 (48.1%)	8 (29.6%)	77.8%		
>50	16	3 (18.8%)	3 (18.8%)	10 (62.5%)	81.3%		

## Discussion

IL-8 is a multi-origin proinflammatory cytokine with many physiologic functions<sup>9-11</sup> and belongs to the CXC chemokine family. IL-8 can be synthesised and secreted by many malignant tumour cells<sup>12-14</sup>, while the corresponding original normal cells or benign tumour cells cannot secrete IL-8. Akiba et al<sup>12</sup> reported that IL-8 was overexpressed in 23 surgically resected hepatocellular carcinoma (HCC) specimens and seven HCC cell lines, and also correlates with venous invasion and bile duct invasion. Gene silencing of IL-8 significantly inhibits the growth of human tumour xenografts in nude mice. Hoffmann et al<sup>15</sup> observed that IL-8 serum levels are elevated in adenoid cystic carcinoma patients compared with healthy individuals. In the present study, there is evidence that IL-8 was overexpressed in primary SACC tissue compared with the normal salivary tissues. IHC showed that SACC cells were the major producer of IL-8 in the tissues. The data suggest that IL-8 may act as an autocrine/paracrine growth factor in the genesis of salivary adenoid cystic carcinoma.

It is known that the majority of SACC deaths result from tumour metastasis rather than from primary tumours. Yet, the biochemical mechanisms regulating invasion and metastasis of SACC remain poorly under-

stood. Despite its physiologic roles in development and immunity, increasing evidence suggests that IL-8 plays an important role during the invasion and metastasis of carcinoma cells<sup>16-19</sup>. IL-8 is elevated in some cancer cells with high metastatic potential<sup>16,20,21</sup>. Rubie et al<sup>22</sup> revealed the upregulation of IL-8 in colorectal liver metastatic tissues relative to the corresponding primary colorectal cancer tissues. In the present study, it was found that both the positive rate and the strong positive rate of IL-8 expression were higher in the metastatic group than in the non-metastatic group. These results suggest that IL-8 may play a role in SACC progression and metastasis.

The exact mechanism of IL-8 involved in tumour genesis and progression differs between various malignancies. Despite the increased expression of IL-8 in cancer cells, polymorphisms of IL-8 have also been characterised in certain cancers<sup>23,24</sup>. The induction of IL-8 signaling activates multiple signaling pathways at transcription or post-translation level. IL-8 increases proliferation and survival of endothelial and cancer cells. It modulates the organisation of the cell cytoskeleton to potentiate the migration of cancer cells, endothelial cells and infiltrating neutrophils at the tumour site. Furthermore, IL-8 was also demonstrated to activate collagenase<sup>19,25</sup> and other metastasis-related genes<sup>26-28</sup> to facilitate cancer metastasis. Further studies, especially with larger sam-



ples, are needed to elucidate the mechanisms and significance of IL-8 and its related molecules in SACC.

In conclusion, this study has shown that IL-8 was overexpressed in SACC and correlated with distant metastasis of SACC. IL-8 may be an important factor facilitating oncogenesis and metastasis in SACC. These results might give an insight into the initiation and progression of the tumour and aid in the design of new strategies for diagnosis and treatment of SACC.

### Acknowledgments

We gratefully acknowledge Kai HU, Jia FU and Dengcheng WU from Peking University School and Hospital of Stomatology for their expert technical assistance. This research was supported by the National Natural Science Foundation of China (39470754) and the National “985” Project of China (985-2-040-115).

### References

- Bradley PJ. Adenoid cystic carcinoma of the head and neck: a review. *Curr Opin Otolaryngol Head Neck Surg* 2004;12:127–132.
- Milano A, Longo F, Basile M. Recent advances in the treatment of salivary gland cancers: emphasis on molecular targeted therapy. *Oral Oncol* 2007;43:729–734.
- Balkwill F. Cancer and the chemokine network. *Nat Rev Cancer* 2004;4:540–550.
- Yoshimura T, Matsushima K, Tanaka S, Robinson EA, Appella, E, Oppenheim JJ, Leonard EJ. Purification of a human monocyte-derived neutrophil chemotactic factor that has peptide sequence similarity to other host defense cytokines. *Proc Natl Acad Sci USA* 1987;84:9233–9237.
- Haraguchi M, Komuta K, Akashi A, Matsuzaki S, Furui J, Kanematsu T. Elevated IL-8 levels in the drainage vein of resectable Dukes' C colorectal cancer indicate high risk for developing hepatic metastasis. *Oncol Rep* 2002;9:159–165.
- Matsuo Y, Ochi N, Sawai H, Yasuda A, Takahashi H, Funahashi H et al. CXCL8/IL-8 and CXCL12/SDF-1 $\alpha$  co-operatively promote invasiveness and angiogenesis in pancreatic cancer. *Int J Cancer* 2009;124:853–861.
- Yoo JY, Kim JH, Kim J, Huang JH, Zhang SN, Kang YA et al. Short hairpin RNA-expressing oncolytic adenovirus-mediated inhibition of IL-8: effects on antiangiogenesis and tumor growth inhibition. *Gene Ther* 2008;15:635–651.
- Yoshizaki T, Horikawa T, Qing-Chun R, Wakisaka N, Takeshita H, Sheen TS et al. Induction of interleukin-8 by Epstein-Barr virus latent membrane protein-1 and its correlation to angiogenesis in nasopharyngeal carcinoma. *Clin Cancer Res* 2001;7:1946–1951.
- Marshall LJ, Ramdin LS, Brooks T, Dphil PC, Shute JK. Plasminogen activator inhibitor-1 supports IL-8-mediated neutrophil transendothelial migration by inhibition of the constitutive shedding of endothelial IL-8/heparan sulfate/syndecan-1 complexes. *J Immunol* 2003;171:2057–2065.
- Jean-Baptiste E. Cellular mechanisms in sepsis. *J Intensive Care Med* 2007;22:63–72.
- Duan H, Koga T, Kohda F, Hara H, Urabe K, Furue M. Interleukin-8-positive neutrophils in psoriasis. *J Dermatol Sci* 2001;26:119–124.
- Akiba J, Yano H, Ogasawara S, Higaki K, Kojiro M. Expression and function of interleukin-8 in human hepatocellular carcinoma. *Int J Oncol* 2001;18:257–264.
- Yuan A, Yang PC, Yu CJ, Chen WJ, Lin FY, Kuo SH, Luh KT. Interleukin-8 messenger ribonucleic acid expression correlates with tumor progression, tumor angiogenesis, patient survival, and timing of relapse in non-small-cell lung cancer. *Am J Respir Crit Care Med* 2000;162:1957–1963.
- Murphy C, McGurk M, Pettigrew J, Santinelli A, Mazzucchelli R, Johnston PG et al. Nonapical and cytoplasmic expression of interleukin-8, CXCR1, and CXCR2 correlates with cell proliferation and microvessel density in prostate cancer. *Clin Cancer Res* 2005;11:4117–4127.
- Hoffmann TK, Sonkoly E, Homey B, Scheckenbach K, Gwosdz C, Bas M et al. Aberrant cytokine expression in serum of patients with adenoid cystic carcinoma and squamous cell carcinoma of the head and neck. *Head Neck* 2007;29:472–478.
- Li A, Varney ML, Singh RK. Expression of interleukin 8 and its receptors in human colon carcinoma cells with different metastatic potentials. *Clin Cancer Res* 2001;7:3298–3304.
- De Larco JE, Wuertz BR, Rosner KA, Erickson SA, Gamache DE, Manivel JC, Furcht LT. A potential role for interleukin-8 in the metastatic phenotype of breast carcinoma cells. *Am J Pathol* 2001;158:639–646.
- Krzystek-Korpacka M, Matusiewicz M, Diakowska D, Grabowski K, Blachut K, Konieczny D et al. Elevation of circulating interleukin-8 is related to lymph node and distant metastases in esophageal squamous cell carcinomas – implication for clinical evaluation of cancer patient. *Cytokine* 2008;41:232–239.
- Chikazawa M, Inoue K, Fukata S, Karashima T, Shuin T. Expression of angiogenesis-related genes regulates different steps in the process of tumor growth and metastasis in human urothelial cell carcinoma of the urinary bladder. *Pathobiology* 2008;75:335–345.
- Bendre MS, Gaddy-Kurten D, Mon-Foote T, Akel NS, Skinner RA, Nicholas RW, Suva LJ. Expression of interleukin 8 and not parathyroid hormone-related protein by human breast cancer cells correlates with bone metastasis *in vivo*. *Cancer Res* 2002;62:5571–5579.
- Scelbas GM, Fujioka S, Schmidt C, Li Z, Frederick WA, Yang W et al. Overexpression of tropomyosin-related kinase B in metastatic human pancreatic cancer cells. *Clin Cancer Res* 2005;11:440–449.
- Rubie C, Frick VO, Pfeil S, Wagner M, Kollmar O, Kopp B et al. Correlation of IL-8 with induction, progression and metastatic potential of colorectal cancer. *World J Gastroenterol* 2007;13:4996–5002.
- Shimizu Y, Kondo S, Shirai A, Furukawa M, Yoshizaki T. A single nucleotide polymorphism in the matrix metalloproteinase-1 and interleukin-8 gene promoter predicts poor prognosis in tongue cancer. *Auris Nasus Larynx* 2008;35:381–389.
- Hamajima N. Persistent *Helicobacter pylori* infection and genetic polymorphisms of the host. *Nagoya J Med Sci* 2003;66:103–117.
- Watanabe H, Iwase M, Ohashi M, Nagumo M. Role of interleukin-8 secreted from human oral squamous cell carcinoma cell lines. *Oral Oncol* 2002;38:670–679.
- Manna SK, Ramesh GT. Interleukin-8 induces nuclear transcription factor-kappaB through a TRAF6-dependent pathway. *J Biol Chem* 2005;280:7010–7021.
- Singh B, Berry JA, Vincent LE, Lucci A. Involvement of IL-8 in COX-2-mediated bone metastases from breast cancer. *J Surg Res* 2006;134:44–51.
- Zhu YM, Azahri NS, Yu DC, Woll PJ. Effects of COX-2 inhibition on expression of vascular endothelial growth factor and interleukin-8 in lung cancer cells. *BMC Cancer* 2008;8:218.